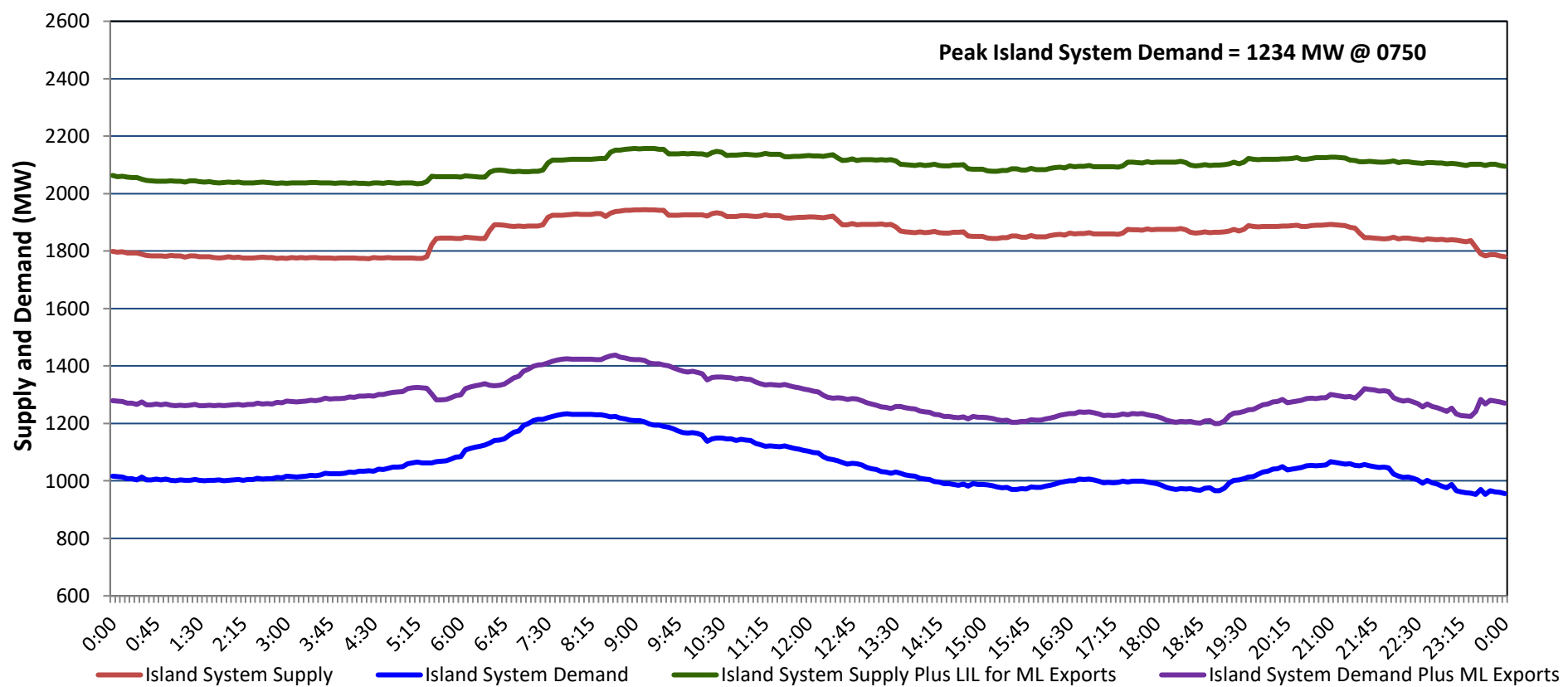


Newfoundland Labrador Hydro (NLH) Supply and Demand Status Report Filed Tuesday, April 08, 2025

Section 1 Island Interconnected System - Supply, Demand & Exports Actual 24 Hour System Performance For Monday, April 07, 2025



Island Supply Notes For April 07, 2025

- A As of 0952 hours, March 11, 2025, Granite Canal Unit available at 32 MW due to forced derating (40 MW).
- B As of 0816 hours, March 26, 2025, St. Anthony Diesel Plant available at 8.85 MW due to forced derating (9.7 MW).
- C As of 0800 hours, March 30, 2025, Holyrood Unit 3 unavailable due to planned outage 130 MW (150 MW).
- D As of 0823 hours, March 31, 2025, Bay d'Espoir Unit 1 unavailable due to planned outage (76.5 MW).
- E As of 0823 hours, March 31, 2025, Bay d'Espoir Unit 2 unavailable due to planned outage (76.5 MW).
- F As of 0854 hours, March 31, 2025, Stephenville Gas Turbine available at 25 MW due to planned derating (50 MW).

Section 2 Island Interconnected System - Supply, Demand & Outlook

Tue, Apr 08, 2025	Island System Outlook ²	Seven-Day Forecast	Island System Daily Peak Demand (MW)	
			Forecast ⁸	Adjusted ⁶
Island System Supply: ⁴	1,930 MW	Tuesday, April 8, 2025	1,260	1,165
NLH Island Generation: ^{3,7}	1,355 MW	Wednesday, April 9, 2025	1,160	1,067
NLH Island Power Purchases: ⁵	95 MW	Thursday, April 10, 2025	1,235	1,141
NP and CBPP Owned Generation:	215 MW	Friday, April 11, 2025	1,215	1,121
LIL/ML Net Imports to Island: ⁹	265 MW	Saturday, April 12, 2025	1,080	988
		Sunday, April 13, 2025	1,055	963
7-Day Island Peak Demand Forecast:	1,260 MW	Monday, April 14, 2025	1,145	1,052

Island Supply Notes For April 08, 2025

- Notes:
1. Generation outages for running and corrective maintenance are included. These are not unusual for power system operations. They generally do not impact customer supply. Hydro schedules outages to system equipment whenever possible to coincide with periods when customer demands are low and sufficient supply reserves are available. However, from time to time equipment outages are necessary and reserves may be impacted.
 2. As of 0800 Hours.
 3. Gross continuous unit output.
 4. Gross output from all Island sources (including Note 3).
 5. NLH Island Power Purchases include: ML Imports, Exploits Generation, Rattle Brook, Star Lake, Wind Generation and capacity assistance (when applicable).
 6. Adjusted for interruptible load and the impact of voltage reduction when applicable.
 7. Due to limitations inherent in the design of combustion turbines, the output of combustion turbines may be reduced in the event that ambient temperatures exceed the threshold required for full rated output. This threshold is dependent on the design of each turbine.
 8. Does not include ML Exports.
 9. LIL Import sunk in the Island System. Actual LIL flows will be restricted by various system conditions including, but not limited to, Island Load, ML Exports and Avalon Unit status.

Section 3 Island Peak Demand and Exports Information Previous Day Actual Peak and Current Day Forecast Peak

Mon, Apr 07, 2025	Island Peak Demand ¹⁰	7:50	1,234 MW
	Exports at Peak		192 MW
	LIL Net Imports to Island		4,723 MWh
Tue, Apr 08, 2025	Forecast Island Peak Demand		1,260 MW

- Notes: 10. Island Demand is supplied by NLH generation and purchases, LIL Imports plus generation owned and operated by Newfoundland Power and Corner Brook Pulp & Paper (Deer Lake Power, DLP).